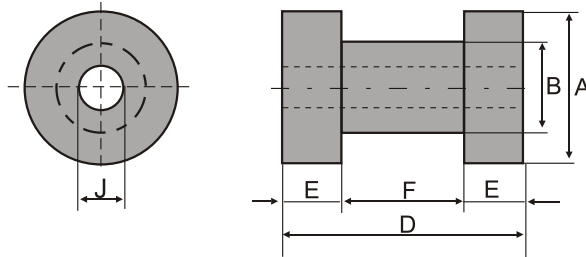


# DRH 型磁芯 (Drum Type CORES)

CONFIGURATIONS:



DIMENSION OF MAIN PRODUCTIONS:

UNIT:mm

Ordering code	A	D	B	E	F	J
DRH18×20	18.03±0.8	20.0±1.0	11.0±0.4	3.75	12.5±0.5	3.2±0.2
DRH22×18	22.0±1.0	18.5±1.0	12.5±0.3	3.5	11.5±0.5	3.75±0.2
DRH28×22	28.0±1.0	22.0±0.15	17.0±0.4	4.0	14.0±0.6	4.2 <sup>+0.6</sup> <sub>-0</sub>

# SDR 型磁芯 (Square drum Type)

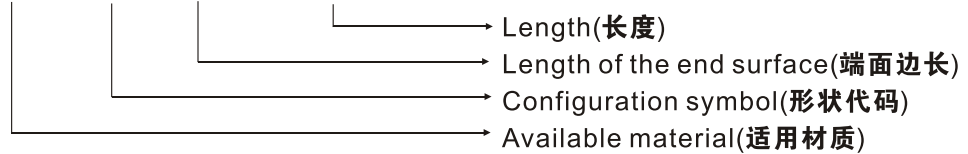
用途: 1、线性线圈

2、扼流线圈

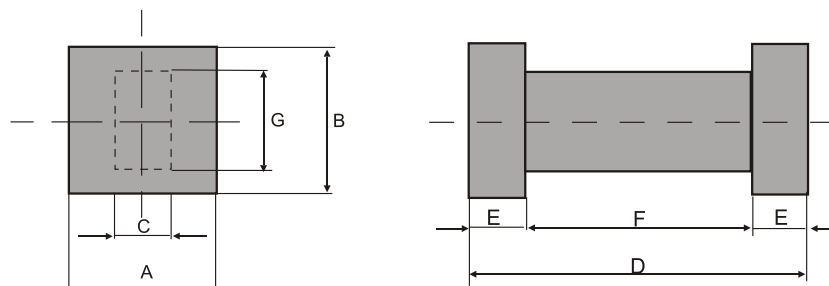
APPLICATION: 1.Linear coils. 2.Choke coils.

ORDERING CODE

Example:SD6 SDR 10 × 19.05



CONFIGURATIONS:



DIMENSION OF MAIN PRODUCTIONS:

UNIT:mm

Ordering code	A	B	C	D	E	F	G
SDR 8.06×19.05	8.06±0.2	8.06±0.2	2.9±0.15	19.05±0.6	3.1	12.8±0.5	5.7±0.2
SDR 10×19.05	10.0±0.3	10.0±0.3	3.7±0.15	19.05±0.6	2.1	14.9±0.6	6.9±0.3
SDR 2.4×9.9	2.4±0.2	3.8±0.2	1.8±0.1	9.9±0.2	2.2	4.5±0.2	6.0±0.2